



ANTAMEDIA **HOTSPOT**



What is Antamedia HotSpot ?

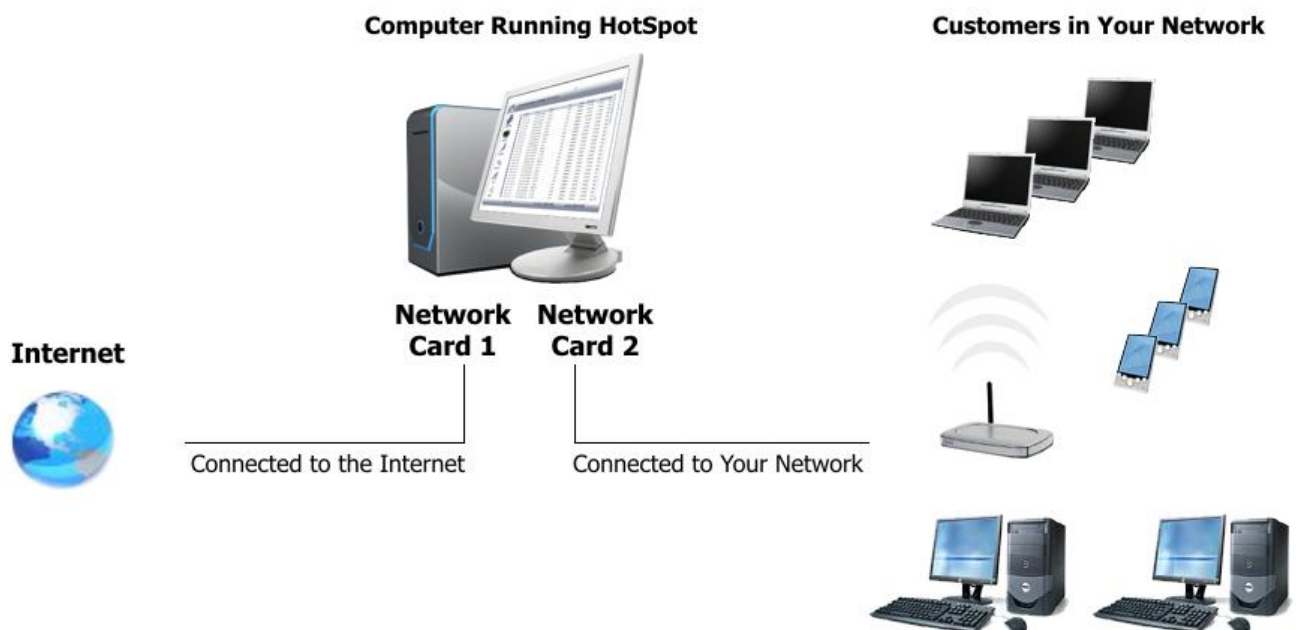
Antamedia HotSpot is Windows PC gateway software which helps you in controlling and billing your customers for the Internet usage. Antamedia HotSpot does not require any Client software installations as it uses captive portal technology to show login page in customer browser. It is suitable for all the purposes where a customer should be prompted to type the username and the password to get the Internet access. After successful login, your customer will see the remaining time and bandwidth quota, expiration date and other relevant info. HotSpot keeps track of customer account and shows warning message when the account is due to expire, helping a customer to refill the account and continue using your service without interruption. Software includes billing, statistics and reporting with many other useful features. It is hardware independent and you can use any type of access points, routers, switches and other equipment to control your WiFi, WiMax, LAN, Cable, DSL, Satellite and other type of network connections.

Requirements

Antamedia HotSpot software should be installed on a standard **PC** computer, running **Windows** OS. Computer needs to have **two network cards** which are connected to the Internet on one side and to your network on the other side.

HotSpot analyzes all network traffic between customers on your network and Internet. If customer is logged in, traffic is passed through the second network card to the Internet.

Antamedia HotSpot have to be configured as a gateway for all computers in your network. On the first run, HotSpot will help you to configure your network through Setup Wizard.



How Can It Help You ?

Become Internet Service Provider

Antamedia HotSpot has advanced architecture which allows both simple and very large networks. You can start offering WiFi services and grow slowly by adding new access points, connect different city areas, one step a time. However, HotSpot can be used to control wide area networks, cities, making you a Internet Service Provider. You can easily integrate several separate HotSpot networks in one large network, where all accounts are served from central database (included free of charge). Your customers will be able to connect to any HotSpot with their account.

Create Paid or Free WiFi HotSpot

Antamedia WiFi HotSpot software helps you to create free or paid WiFi HotSpot. Advantage of our solution is very high customization of user accounts which allows creating limited or unlimited accounts. Among classic features like time and bandwidth quota limits, you can configure daily time limit, number of daily logins, number of simultaneous logins with aggregation, usage schedule (happy hour, nighttime, daytime, weekends ...), which is very practical when offering free WiFi Internet. In addition, it's very easy to offer paid Internet access with higher speeds, quota or unlimited daily or monthly access.

Offer WiFi Services in Your Hotel, Coffee Shop, Restaurant

Offering high-speed wireless Internet services in one hotel will only help you increase occupancy and improve tenant and guest satisfaction. Furthermore, it will also represent additional source of revenue for your business. With the use of Antamedia WiFi HotSpot software in your WiFi Hotel, you will be able to:

- control and monitor access to the Internet for all computers, both wired and wireless in your guest rooms
- provide reliable wireless Internet access in your restaurant, lobby and conference rooms, which makes it ideal for seminars and meetings
- maintain secure access to the Internet resources outside the hotel, like on golf courses or by the hotel pools.

Serve Walk-in Laptop Customers in Your Cyber Cafe

If you run an Internet Café or Gaming Center, a great profit booster can be a wireless network. Many people use their own laptop for everyday job or on vacation to stay in touch with their family and friends. Even in non-working hours of your primary business, your customers will be able to use your services and generate profit. Best of all, it's automated, there are no maintenance fee for computers, licenses for software and OS. Your cafe, showing your WiFi logo, will be more professional and will differentiate you in high cybercafe competition.

Can be used in Various Locations

Flexible architecture makes it suitable for different locations like Airports, Cruise Ships, Train Stations, Motels... Customers can sign-in online and pay using credit card or tickets can be printed in advance and sold by front desk staff, receptionist, bartender, cybercafe operator, or by a vending machine. In case of credit card payment, the amount is collected from customer by your Credit Card processing company and stored to your merchant account. A payment gateway company transfers collected money to your bank account usually at the end of the month. Antamedia does not collect any fees. Full revenue goes to you.

User Interface

Main screen shows the most important details of connected computers: IP and MAC address, account username, time, quota, download and upload rate and inactivity timeout. Bottom status line shows number of connected computers and current total download and upload rate represented in KB/sec, and these values are continuously updated. On top status bar software displays important messages, like users login and logout, incorrect login attempts, online payments etc, so you can always see what's happening on your HotSpot.

From the main screen represented on picture below, you can choose one of the options:

COMPUTERS

Displays computers (logged in customers) and their current status

ACCOUNTS

Generate accounts

STATISTICS

Contains bills, log, statistics and reports, visited URLs and connection log showing who is trying to login in your network

OPERATOR

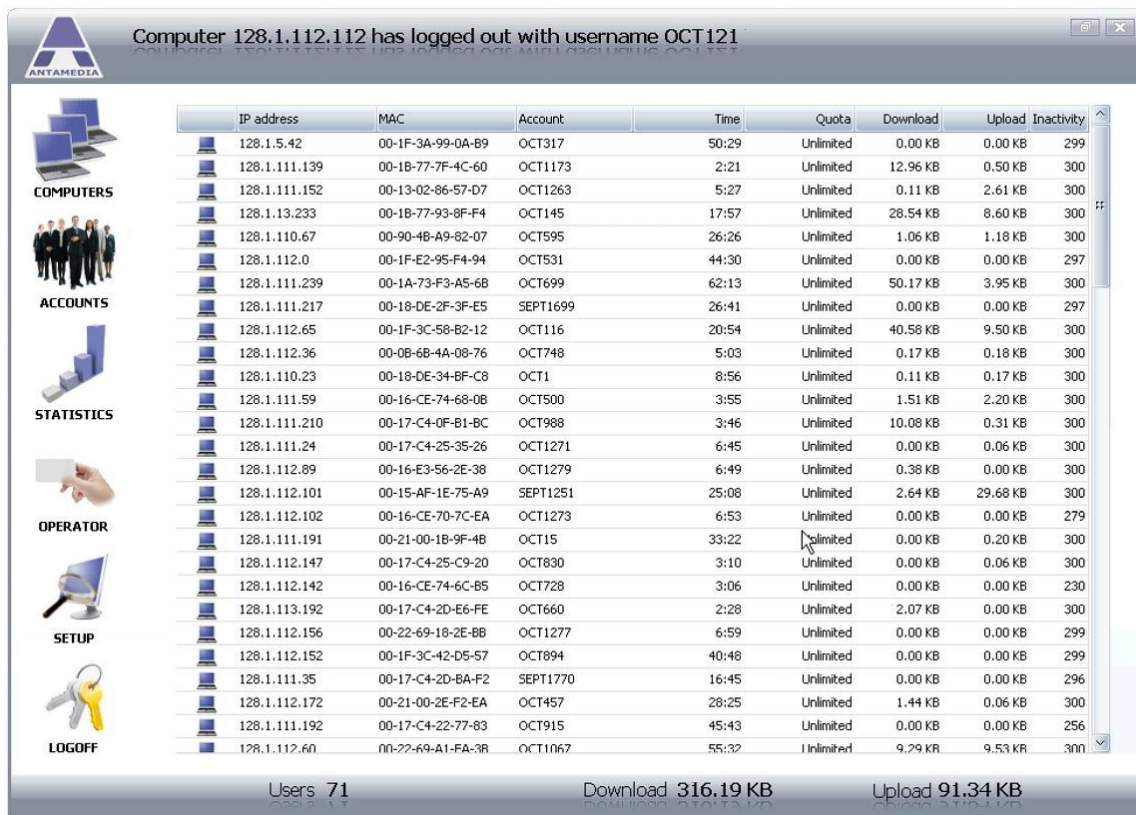
Very simple user interface for creating accounts, suitable for front desks

SETUP

Administrator configuration options

LOGOUT

Lock HotSpot software to prevent unauthorized activity. HotSpot continues traffic control after employee or administrator logout



Computer 128.1.112.112 has logged out with username OCT121

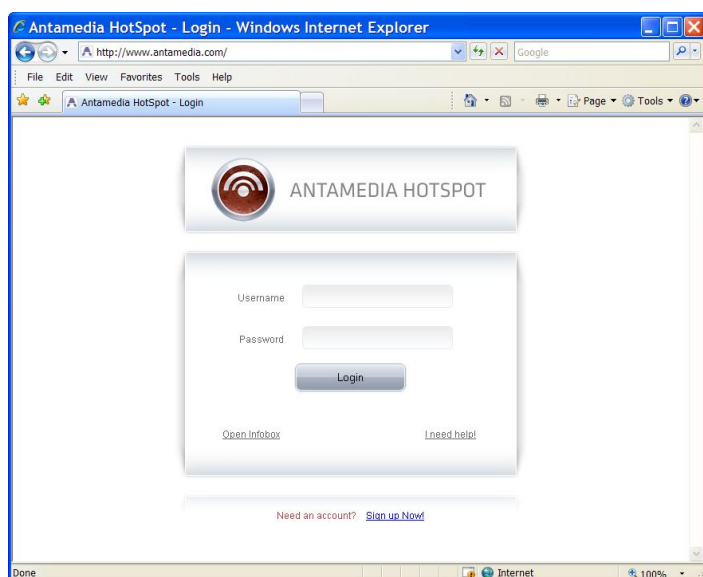
IP address	MAC	Account	Time	Quota	Download	Upload	Inactivity
128.1.5.42	00-1F-3A-99-0A-B9	OCT317	50:29	Unlimited	0.00 KB	0.00 KB	299
128.1.111.139	00-18-77-7F-4C-60	OCT1173	2:21	Unlimited	12.96 KB	0.50 KB	300
128.1.111.152	00-13-02-86-57-D7	OCT1263	5:27	Unlimited	0.11 KB	2.61 KB	300
128.1.13.233	00-18-77-93-8F-F4	OCT145	17:57	Unlimited	28.54 KB	8.60 KB	300
128.1.110.67	00-90-4B-A9-82-07	OCT595	26:26	Unlimited	1.06 KB	1.18 KB	300
128.1.112.0	00-1F-E2-95-F4-94	OCT531	44:30	Unlimited	0.00 KB	0.00 KB	297
128.1.111.239	00-1A-73-F3-A5-68	OCT699	62:13	Unlimited	50.17 KB	3.95 KB	300
128.1.111.217	00-18-DE-2F-3F-E5	SEPT1699	26:41	Unlimited	0.00 KB	0.00 KB	297
128.1.112.65	00-1F-3C-58-B2-12	OCT116	20:54	Unlimited	40.58 KB	9.50 KB	300
128.1.112.36	00-08-68-4A-08-76	OCT748	5:03	Unlimited	0.17 KB	0.18 KB	300
128.1.110.23	00-18-DE-34-BF-C8	OCT1	8:56	Unlimited	0.11 KB	0.17 KB	300
128.1.111.59	00-16-CE-74-68-08	OCT500	3:55	Unlimited	1.51 KB	2.20 KB	300
128.1.111.210	00-17-C4-0F-B1-BC	OCT988	3:46	Unlimited	10.08 KB	0.31 KB	300
128.1.111.24	00-17-C4-25-35-26	OCT1271	6:45	Unlimited	0.00 KB	0.06 KB	300
128.1.112.89	00-16-E3-56-2E-38	OCT1279	6:49	Unlimited	0.38 KB	0.00 KB	300
128.1.112.101	00-15-AF-1E-75-A9	SEPT1251	25:08	Unlimited	2.64 KB	29.68 KB	300
128.1.112.102	00-16-CE-70-7C-EA	OCT1273	6:53	Unlimited	0.00 KB	0.00 KB	279
128.1.111.191	00-21-00-18-9F-4B	OCT15	33:22	Unlimited	0.00 KB	0.20 KB	300
128.1.112.147	00-17-C4-25-C9-20	OCT830	3:10	Unlimited	0.00 KB	0.06 KB	300
128.1.112.142	00-16-CE-74-6C-B5	OCT728	3:06	Unlimited	0.00 KB	0.00 KB	230
128.1.113.192	00-17-C4-2D-E6-FE	OCT660	2:28	Unlimited	2.07 KB	0.00 KB	300
128.1.112.156	00-22-69-18-2E-BB	OCT1277	6:59	Unlimited	0.00 KB	0.00 KB	299
128.1.112.152	00-1F-3C-42-D5-57	OCT894	40:48	Unlimited	0.00 KB	0.00 KB	299
128.1.111.35	00-17-C4-2D-BA-F2	SEPT1770	16:45	Unlimited	0.00 KB	0.00 KB	296
128.1.112.172	00-21-00-2E-F2-EA	OCT457	28:25	Unlimited	1.44 KB	0.06 KB	300
128.1.111.192	00-17-C4-22-77-83	OCT915	45:43	Unlimited	0.00 KB	0.00 KB	256
128.1.112.60	00-22-69-A1-FA-38	OCT1067	55:32	Unlimited	9.29 KB	9.53 KB	300

Users 71 Download 316.19 KB Upload 91.34 KB

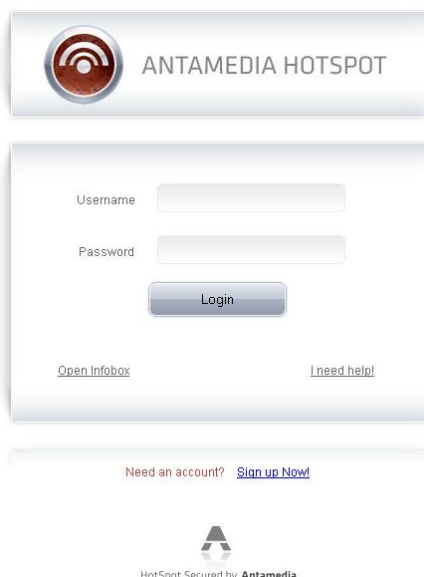
Customer Interface

When a customer connects to your network and type any website address, login page will be displayed in browser. Your customer can connect to the network in different ways - using wireless network card connected to Access Point, or using UTP cable connected to switch, router etc in the case of wired connectivity.

Login page contains **Username** and **Password** fields, **Login** button, **Open Infobox** link, **Help** link, and **Signup Now** link. The customer needs to type correct account information - Username and Password and press Login button. HotSpot verifies this information in database and if the customer entered correct details, login would be granted.

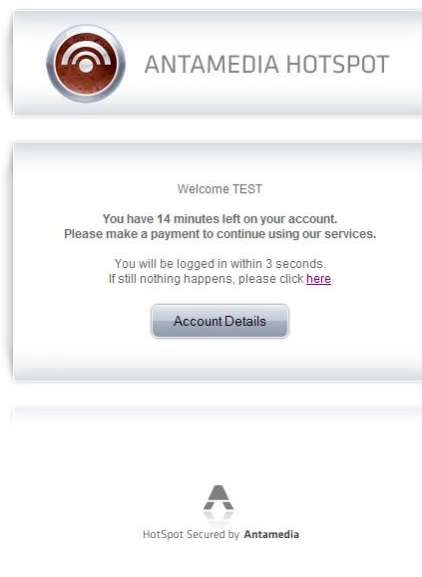


Infobox is useful as it keeps a customer informed about the remaining time and bandwidth quota, and current MAC and IP address. Since many browsers blocks pop-up windows, it is recommended to advise customers to click on **Open Infobox** link before clicking on Login button. Most of the browsers do not prevent pop-up windows which are the result of user action.



Customer types username and password and clicks Login button.

Welcome screen shows, then redirects to the page which customer requested.



Features

Download and Upload Rate Control (Traffic Shaping Management)

Download and upload rate is configured for each user account separately and it represents speed of customer connection to the Internet. You can sell high rate accounts for additional fee or save more bandwidth for VIP customers.

Example: set 10 KB/s for regular accounts and 100 KB/s for special accounts

Bandwidth Quota Control (Traffic Quota Management)

Bandwidth quota is configured for every account and it represents total amount of traffic available to customer.

Example: Customer can download 100 MB daily, 5 GB monthly or combination of these, with option to order additional bandwidth

Customize Pages

Each page displayed in customer browser can be customized to fit your corporate layout. You can put your company logo, change colors etc.

Secure Login

HotSpot login can be switched to secure mode login through HTTPS server, included in the package. We provide standard generic SSL certificate, and you can additionally purchase your own certificate in order to eliminate browser warnings. Secure mode can be used for login, password change, data collecting, while credit card payments always goes through secure mode.

Accept Credit Cards

Automated payment process where customer choose username, password, pricing plan and pay with credit card. Account is created and customer can browse the Internet. You will not need staff to sell tickets. HotSpot supports over 50 Major Internet Payment Gateways including PayPal.

Statistics Available in Chart and Table View

Real time statistics and usage reports provides time usage, bandwidth, logins and sale reports in chart and table view. Check account download, number of logins during the day, top customers by time usage etc.

IP and Port Filtering

Specify IP and port blocking rules for outgoing traffic. Option can be used to limit only specific services, like limit ftp or email usage, or to disable complete access to IP range. For example disable IP addresses 80.10.10.10 to 80.100.100.100 and port range 10-100.

Block Websites

Disable access to desired host IPs, and redirect them to any other IP and port. For example, redirect all blocked websites to your website homepage.

SMTP Roaming

Redirect all customer E-mails through your own SMTP server. This option solves problem when ISP blocks default SMTP port, as you can redirect all E-mail traffic to your SMTP server running on different port. Entire process is transparent and customer can use any email client software without having to change smtp server.

URL Filtering

Block access to web sites that contains specified keywords in url address. You can prevent access to porn, warez etc.

URL Tracking

Log URL addresses that customers visit along with their username, IP, MAC and date and time when page was visited

Autologin

Auto login feature automates login process. After initial login, customer will no longer be prompted for username and password. This significantly improves ease of use and customer satisfaction. Autologin can be used for selected accounts or to automate login for VOIP phones through HotSpot. This feature is very suitable for any ISP.

URL Keywords

Specify keywords which redirect customer browser to other URL. For example, when customer enters competition brand name, browser will be redirected to your website. In addition, customer can modify default keywords for logout (LogMeOut) and info page (ShowMeInfo).

ShowMeInfo and LogMeOut Keywords

Customer can automatically logout by typing LogMeOut in browser address bar, or get info page by typing ShowMeInfo. These keywords require NetBios option enabled in customer Internet connection.

Employee Accounts

Every employee has his own account which is used for HotSpot login. Employee activity is logged with the time and type of action performed. There are different employee types like Administrator, Manager, Operator and each has access to different areas of software. Manager can see statistics and modify accounts, but can't modify HotSpot main settings.

Operator Mode - Easy Interface for Account Generating

Very simple and straightforward user interface for account generating. In 3 steps operator will choose price plan, number of accounts to generate and click on Generate button to make new accounts and optionally print them. It's possible to connect multiple HotSpots in operator mode and generate accounts from different locations. It can be also used for the easy management from remote computer, which is connected to the same HotSpot database. For this purpose you will need to obtain HotSpot Operator Licence

NAT (Network Address Translation)

HotSpot optionally uses NAT to share Internet connection to your network. This allows you to share one Internet connection (DSL, cable modem, wireless...) to all your customers.

Usage Scheduling

Configure different day / time templates when customers are able to use your services. For example, some customers can login from 8AM to 8PM, while others can login on weekends. Predefined usage scheduling templates are included.

Customer Data Collection

Force customer to enter personal data after login (like name, address, e-mail, etc.). After submitting, customer will get Internet access. You can use customers data, for your own records or for marketing purposes.

Multiple Location Support

Connect all your hotspots in one network and use the same database. Your customers will be able to use their remaining time on any of the hotspot locations. For example, WISP can use multiple Internet lines in different parts of the city and connect all hotspots in one network and one database

Customizable Print Templates for Tickets, Bills and Reports

Modify existing print templates or create totally new templates that match your business identity.

HotSpot Activity Log

HotSpot logs different actions performed by employees or customers, including sales, session start and stop, time of login attempts etc.

Integrate HotSpot With Third-Party Software

Easily generate accounts, get a list of price plans, and perform various other actions from your own or third-party software. Integration is done as a HTTP GET query and XML response which offer very short integration time.

Setup Wizard

Easily configure most important options. Wizard will help you to share your Internet connection using HotSpot NAT feature, instruct you how to configure computers in your network, personalize your HotSpot so you can start providing service immediately.

Language Editor

There are plenty of languages included in HotSpot software. Any of these can be adjusted to your own needs through integrated editor. Some of included languages are: English, Spanish, Portuguese, French, Serbian, Arabic, Russian, Icelandic, Swedish, Danish, Greek, Croatian, German, Polish...

Large Number of Simultaneous Connections

After registering HotSpot software you can configure number of simultaneous connections. Demo version limits this number to 3, along with restart time restrictions.

Themes

Easy change of HotSpot theme displayed in customer browser. You can create your own themes using white-label themes included with software, and include your own graphics and functionality.

MAC and IP Whitelist

Enable specified computers (identified by MAC or IP address of network card) to pass-through the HotSpot gateway without authentication. For example: allow some computers to use your services without time and quota control. Other computers, like WiFi Laptops will still be redirected for login page.

Welcome Message

Customize message which appears on welcome screen after customer login. Show warning message that account is about to expire if time and quota are below defined limits or expiration date is near. Customer will be informed when it's time to top-up account or make monthly payment.

E-mail Notifications

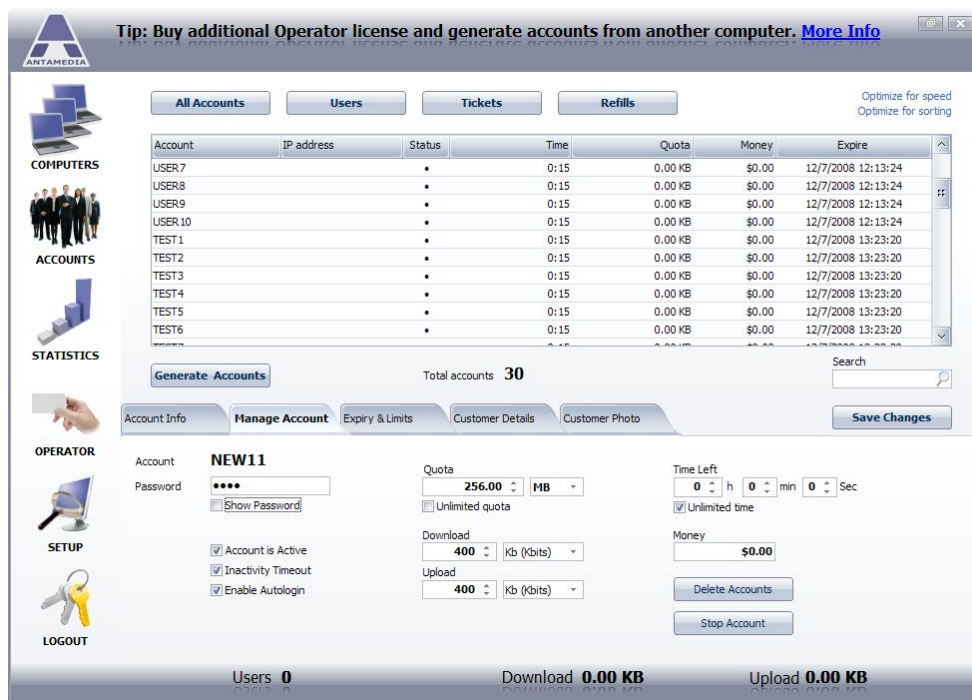
Send e-mail messages to your customers to remind them about account expiration, send payment receipt, newsletter or service maintenance. HotSpot includes default E-mail templates which you can edit or you can create new templates

Host Whitelist

Customer can browse specified host sites without authentication. You can allow browsing of company website with advertisement free of charge. If customers wants to find out more, login will be required.

Customer Accounts

User accounts are represented with username and password required for login to HotSpot. Tickets are prepaid based and represented with a code. while refills are used to add more time or bandwidth quota to an already existing prepaid user account or ticket. HotSpot takes care to generate unique accounts, with settings defined by the price plan. Each price plan has price, time, bandwidth quota, expiration date and other options.



Tip: Buy additional Operator license and generate accounts from another computer. [More Info](#)

Optimize for speed
Optimize for sorting

Account	IP address	Status	Time	Quota	Money	Expire
USER7		*	0:15	0.00 KB	\$0.00	12/7/2008 12:13:24
USER8		*	0:15	0.00 KB	\$0.00	12/7/2008 12:13:24
USER9		*	0:15	0.00 KB	\$0.00	12/7/2008 12:13:24
USER10		*	0:15	0.00 KB	\$0.00	12/7/2008 12:13:24
TEST1		*	0:15	0.00 KB	\$0.00	12/7/2008 13:23:20
TEST2		*	0:15	0.00 KB	\$0.00	12/7/2008 13:23:20
TEST3		*	0:15	0.00 KB	\$0.00	12/7/2008 13:23:20
TEST4		*	0:15	0.00 KB	\$0.00	12/7/2008 13:23:20
TEST5		*	0:15	0.00 KB	\$0.00	12/7/2008 13:23:20
TEST6		*	0:15	0.00 KB	\$0.00	12/7/2008 13:23:20

Generate Accounts Total accounts 30 Search

Account Info Manage Account Expiry & Limits Customer Details Customer Photo Save Changes

Account NEW11 Password **** Show Password

Quota 256.00 MB Unlimited quota

Download 400 Kb (Kbits) Upload 400 Kb (Kbits)

Time Left 0 h 0 min 0 sec Unlimited time

Money \$0.00

Delete Accounts Stop Account

Users 0 Download 0.00 KB Upload 0.00 KB

Quota represents total bandwidth traffic available to user for downloading or uploading. If you define 100 GB as quota, user can download maximum of 100 GB. Quota can be turned off if you do not wish to limit customer traffic.

Timeleft shows remaining time for Internet usage, but it can also be turned off.

Download and **upload** rate can be adjusted for each user separately.

Inactivity timeout automatically disconnect selected user from the Internet after specified time of inactivity.

Account expires specifies the date when an account expires. After the expiration date the account can not be used anymore for login and a user will see a message that the account has expired.

Bandwidth quota daily limit represents total bandwidth traffic available to a user on daily basis. When all daily quota is used, a user can login on the next day.

Limit daily time usage represents total time available for the Internet usage on daily basis. When all daily time is used, a user can login on the next day.

Limit number of daily logins limits how many times a user can login on daily basis.

Usage schedule specifies time period when an account can login. This option can be used for example to allow login for account from 8AM to 8PM, or only on weekends, or to force the users to logout at midnight.

Fixed MAC limits an account so it can login only from one computer.

Multilogin option allows more than one user (computer) to login with the same account. The users sharing one account also share the total download and upload rate.

Customer Details page contains customer personal information and creates valuable addition to the rest of the account options. Details include: first and last name, address, city, postal code, state, country, customer ID, phone and mobile number, Email addresses, gender and birthday, credit card information, document information (ID Card, Passport, Driver licence) and document scan, customer photo.

Usage Logs and Reports

Usage report is a session based report which precisely shows **who**, **when** and **how much** has used your HotSpot services. This report shows the following details: account, IP address, MAC address, start time when a session started (customer logged in, or autologin occurred), end time when session stopped (customer logged out, or an account expired), usage time, download, upload, sales, if a customer has paid.

Usage report offers many reports like:

Usage Log - shows all sessions and it's details

Summary per Account - get totals for selected account

Summary per MAC - get totals for the selected MAC address

Summary per IP - get totals for the selected IP address

You can also get top customers statistics which can help you to identify the customers who have made the biggest profit, most download, or have spent most of the time using your services.

Top customers by download

Top customers by upload

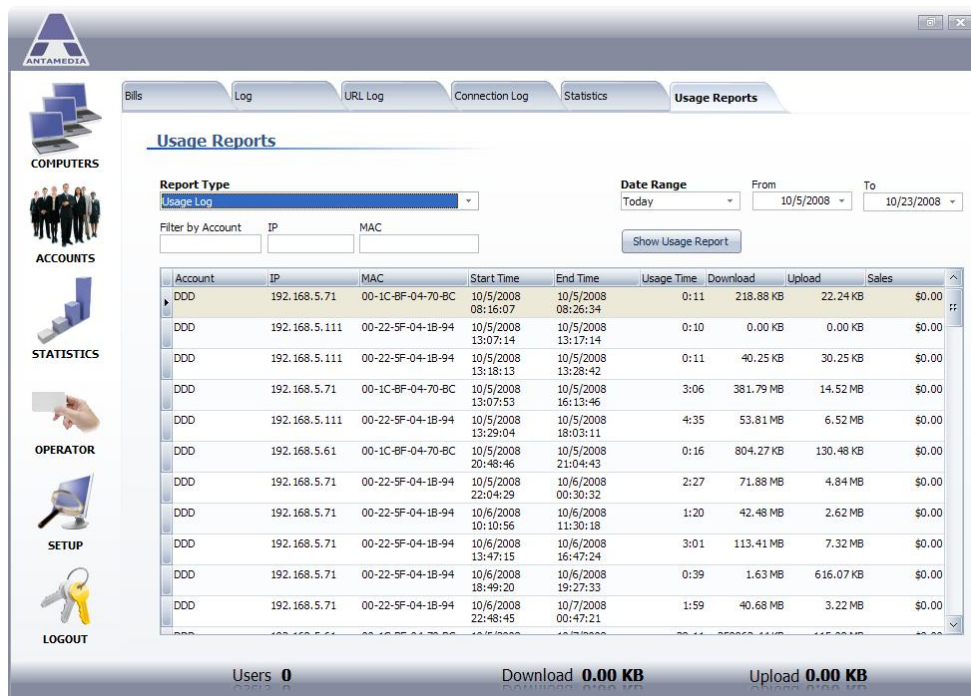
Top customers by time usage

Top customers by sales

Top customers by number of sessions

HotSpot log shows all the actions and events initiated by HotSpot users, operator or software.

Log shows the following details: level (information, warning, payment, system error), date and time, description, action (login, logout, modify, start, stop, error, generate, add, del, new), account, IP address, MAC address.



Account	IP	MAC	Start Time	End Time	Usage Time	Download	Upload	Sales
DDD	192.168.5.71	00-1C-BF-04-70-BC	10/5/2008 08:16:07	10/5/2008 08:26:34	0:11	218.88 KB	22.24 KB	\$0.00
DDD	192.168.5.111	00-22-5F-04-1B-94	10/5/2008 13:07:14	10/5/2008 13:17:14	0:10	0.00 KB	0.00 KB	\$0.00
DDD	192.168.5.111	00-22-5F-04-1B-94	10/5/2008 13:07:14	10/5/2008 13:28:42	0:11	40.25 KB	30.25 KB	\$0.00
DDD	192.168.5.71	00-1C-BF-04-70-BC	10/5/2008 13:07:53	10/5/2008 16:13:46	3:06	381.79 MB	14.52 MB	\$0.00
DDD	192.168.5.111	00-22-5F-04-1B-94	10/5/2008 13:29:04	10/5/2008 18:03:11	4:35	53.81 MB	6.52 MB	\$0.00
DDD	192.168.5.61	00-1C-BF-04-70-BC	10/5/2008 20:48:46	10/5/2008 21:04:43	0:16	804.27 KB	130.48 KB	\$0.00
DDD	192.168.5.71	00-22-5F-04-1B-94	10/5/2008 22:04:29	10/6/2008 00:30:32	2:27	71.88 MB	4.84 MB	\$0.00
DDD	192.168.5.71	00-22-5F-04-1B-94	10/6/2008 10:10:56	10/6/2008 11:30:18	1:20	42.48 MB	2.62 MB	\$0.00
DDD	192.168.5.71	00-22-5F-04-1B-94	10/6/2008 13:47:15	10/6/2008 16:47:24	3:01	113.41 MB	7.32 MB	\$0.00
DDD	192.168.5.71	00-22-5F-04-1B-94	10/6/2008 18:49:20	10/6/2008 19:27:33	0:39	1.63 MB	616.07 KB	\$0.00
DDD	192.168.5.71	00-22-5F-04-1B-94	10/6/2008 22:48:45	10/7/2008 00:47:21	1:59	40.68 MB	3.22 MB	\$0.00

Users 0 Download 0.00 KB Upload 0.00 KB

Billing and Statistics

Statistic report is providing valuable data about your HotSpot operation. It will show you total time usage, bandwidth, number of logins and total sales for selected day or time period. Using this feature you can identify which days generate lower profit and stimulate customers with appropriate benefits. Statistical data is collected continuously, after each customer logout, so you can always enjoy fast report display on screen.

Statistics is available in Chart and Table mode. By default, statistics is displayed in chart mode, giving you a graphical overview of HotSpot activity. You can see, for example, time usage displayed in minutes, over the selected period displayed as days of the year. Depending on the date range selected, you will see an activity in 24 hours for current day, or for a time period defined with the starting and the ending date in the from and to fields. Table mode shows statistics in a condensed view on a daily basis. For each year, month, and day, you will see usage time, number of logins, download, upload and total sales.

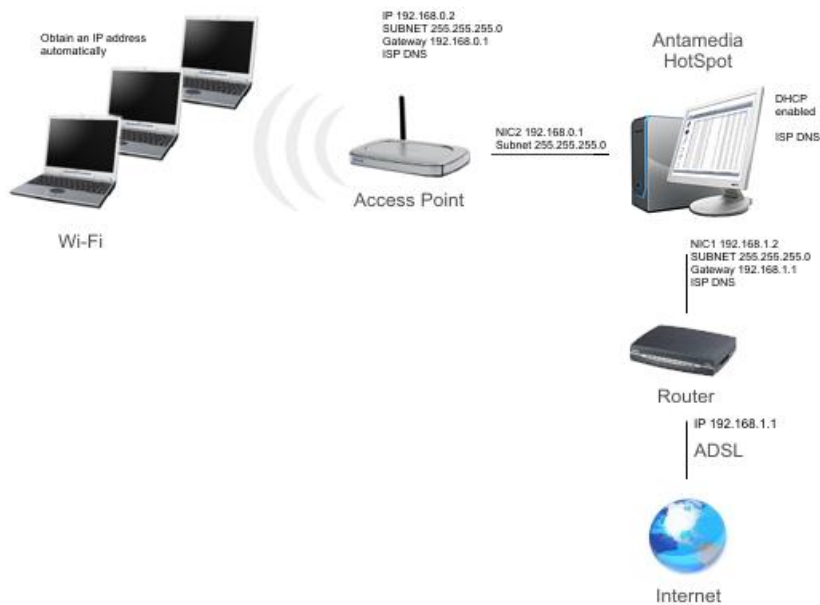


Bill report shows the list of all charged bills. Each bill has the following details: date, subtotal, discount, tax, total amount. If you want to see what was charged on the selected bill, please click on + button to open the list. You can see the following details: description, subtotal, quantity, tax, total amount.

Sample Network Topologies

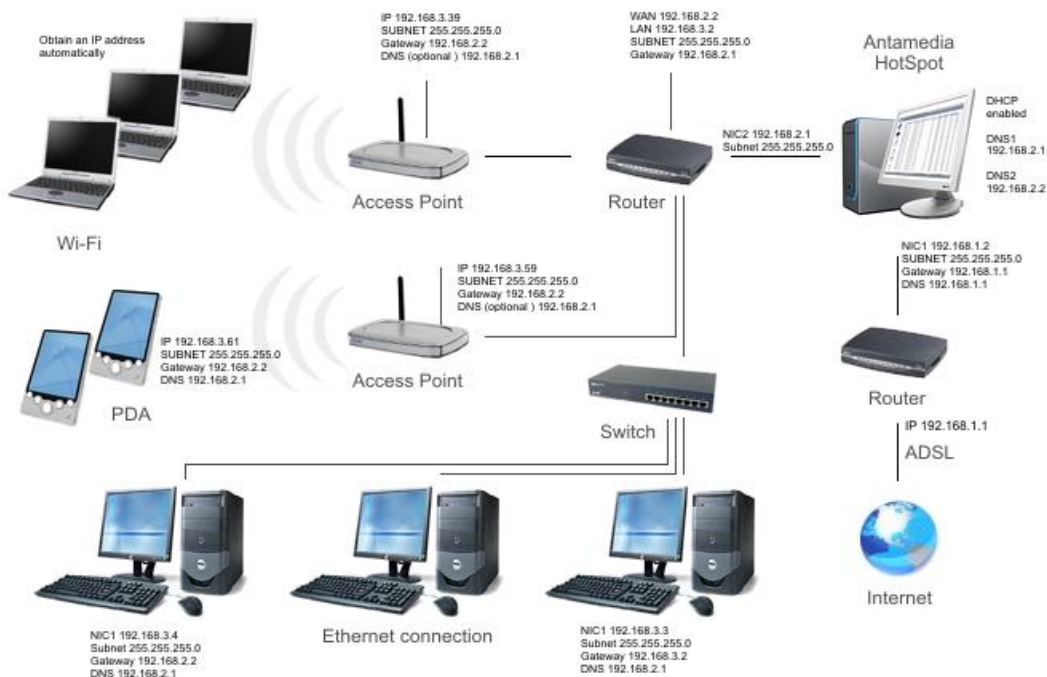
Antamedia HotSpot - Network Topology Example

©2008 Antamedia

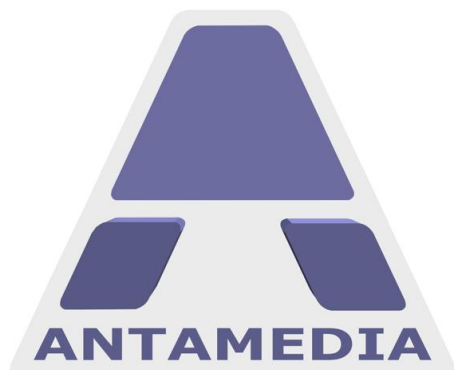


Antamedia HotSpot - Network Topology Example

©2008 Antamedia



Contact Us



ANTAMEDIA

NEBOJSINA 30
11000 BELGRADE
SERBIA

www.antamedia.com

www.antamediahotspot.com

SALES

+381652106600

sales@antamedia.com

CUSTOMER SUPPORT

+381652107700

+381652108800

support@antamedia.com

ONLINE SHOP

<http://www.antamedia.com/order>

